

Absorbor™ Panel



PRODUCT OVERVIEW

The Absorbor™ Panel consists of a high performance acoustical core with hardened square or shaped edges and wrapped in an acoustical fabric. The Absorbor™ Panel offers economy and performance, yielding an NRC up to 1.00.

SIZING

Standard Panel Dimensions: 8' length x 4' width (alternate lengths and widths are available)
Thicknesses: 1", 2", 3" and 4"



LEED CREDITS

MRc4, MRc5
EQc4.2
Schools EQp3, Schools EQc9

FIRE RATING

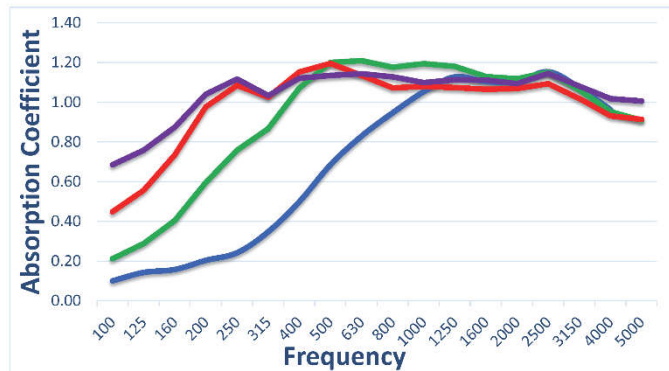
All Class A components (per ASTM E-84)

FINISH

Select from industry standard and custom fabrics, fabrics with proof of acoustical performance preferred.

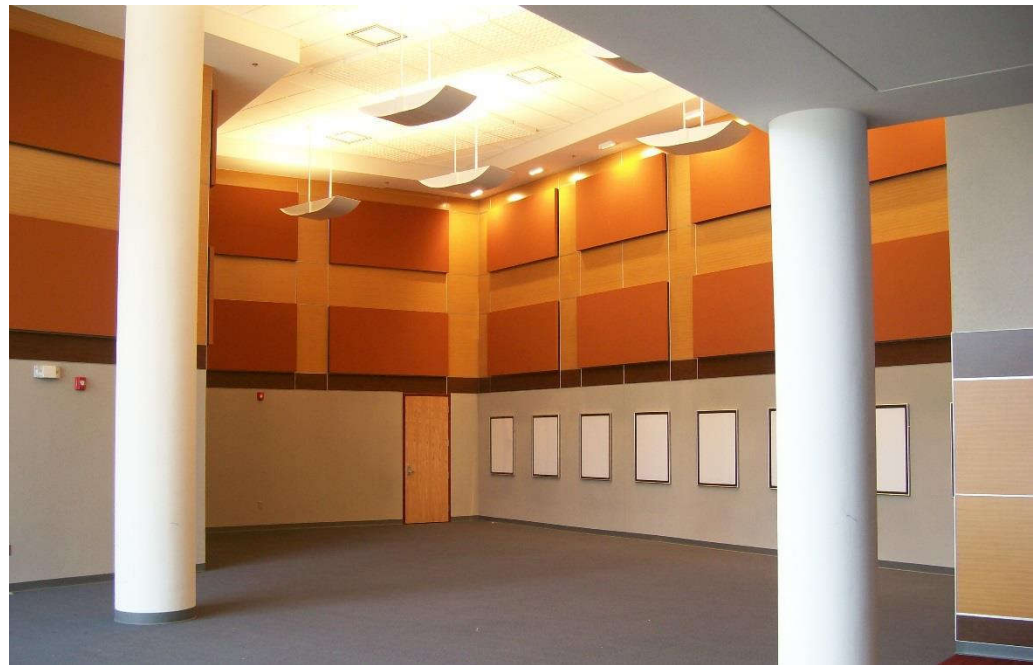
INSTALLATION

Absorbor™ Panels can be easily and quickly hung on any wall surface using RPG's Impalit™ clip. For ceiling applications, the panels can be either direct mounted with Z-bar attachments or suspended using a cloud anchor kit. Panels can also be configured to install in a standard T-bar grid.

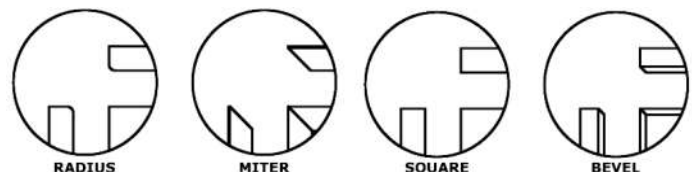


Blue = 1" Absorbor Panel = NRC 0.80
Green = 2" Absorbor Panel = NRC 1.00
Red = 3" Absorbor Panel = NRC 1.00
Purple = 4" Absorbor Panel = NRC 1.00

Frequency	2" Absorbor Panel
100	0.21
125	0.29
160	0.41
200	0.60
250	0.76
315	0.87
400	1.07
500	1.20
630	1.21
800	1.18
1000	1.19
1250	1.18
1600	1.13
2000	1.12
2500	1.15
3150	1.06
4000	0.95
5000	0.91
NRC	1.00



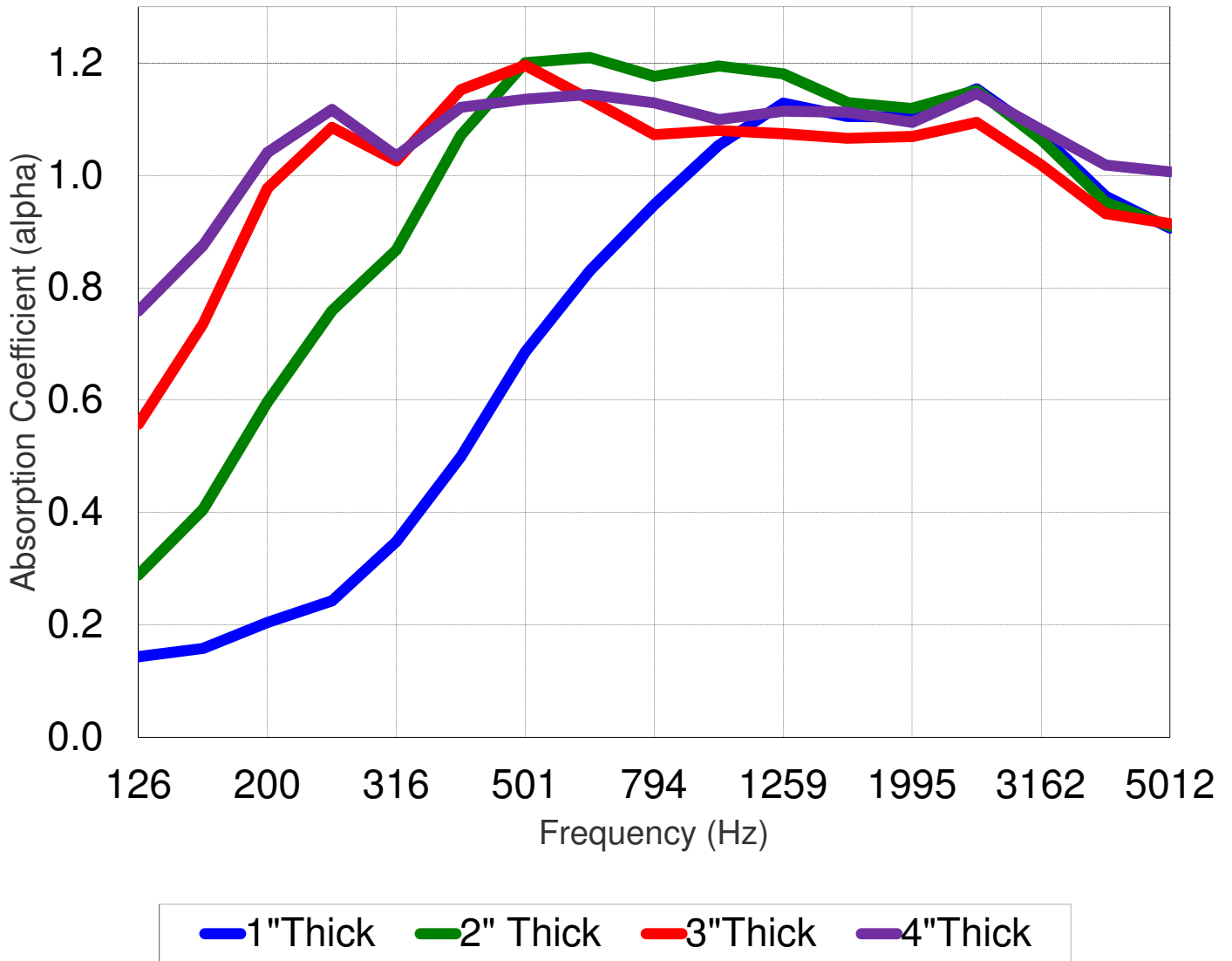
STANDARD PANEL EDGE CONDITIONS





ACOUSTICAL SYSTEMS - LLC

Absorbor™ Panel Random Incidence Performance Data



FREQ	1"Thick	2" Thick	3"Thick	4"Thick
126	0.14	0.29	0.56	0.76
158	0.16	0.41	0.74	0.88
200	0.20	0.60	0.98	1.04
251	0.24	0.76	1.09	1.12
316	0.35	0.87	1.03	1.03
398	0.50	1.07	1.15	1.12
501	0.69	1.20	1.20	1.14
631	0.83	1.21	1.13	1.14
794	0.95	1.18	1.07	1.13
1000	1.05	1.19	1.08	1.10
1259	1.13	1.18	1.07	1.11
1585	1.10	1.13	1.07	1.11
1995	1.10	1.12	1.07	1.09
2512	1.15	1.15	1.09	1.15
3162	1.07	1.06	1.02	1.08
3981	0.96	0.95	0.93	1.02
5012	0.91	0.91	0.91	1.01