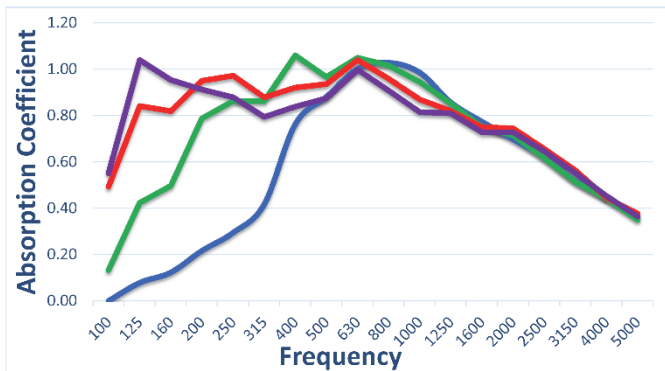
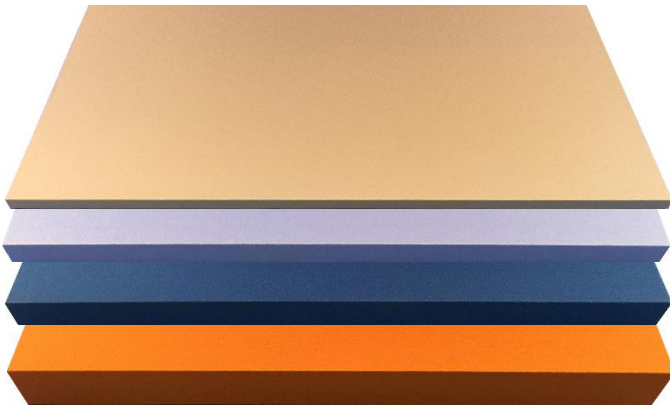


BAD™ Panel



Blue = 1-1/4" BAD Panel = NRC 0.75
 Green = 2-1/4" BAD Panel = NRC 0.90
 Red = 3-1/4" BAD Panel = NRC 0.90
 Purple = 4-1/4" BAD Panel = NRC 0.85

PRODUCT OVERVIEW

The BAD™ Panel is a unique synergy of advanced acoustical technology and simplicity of design for when performance is paramount but budgets are modest. Using an optimal binary pattern of perforations through a Class A fire rated rigid template, the BAD™ Panel achieves an excellent balance of sound absorption across the NRC frequency bands while preserving the ambiance of the space. This unique hybrid technology eliminates excessive high frequency absorption, transitions to a scattering surface in the very high frequencies, prevents lobing inherent in common perforated surfaces and significantly improves mid and low frequency absorption.

SIZING

Standard Panel Dimensions: 8' length x 4' width (alternate lengths and widths are available)
 Thicknesses: 1-1/4", 2-1/4", 3-1/4" and 4-1/4"



LEED CREDITS

MRC4, MRC5, EQc4.2, Schools EQp3, Schools EQc9

FIRE RATING

All Class A components (per ASTM E-84)

FINISH

Select from industry standard and custom fabrics, fabrics with proof of acoustical performance preferred.

INSTALLATION

BAD™ Panels can be easily and quickly hung on any wall surface using RPG's Impalit™ clip. For ceiling applications, the panels can be either direct mounted with Z-bar attachments or suspended using a cloud anchor kit. Panels can also be configured to install in a standard T-bar grid.

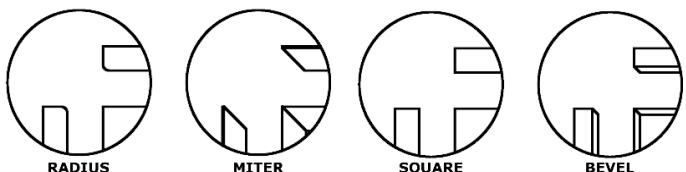
Absorption

Walls & Ceilings

Frequency	2-1/4" BAD Panel
100	0.13
125	0.42
160	0.50
200	0.79
250	0.86
315	0.86
400	1.06
500	0.97
630	1.05
800	1.02
1000	0.95
1250	0.85
1600	0.75
2000	0.71
2500	0.62
3150	0.51
4000	0.44
5000	0.35
NRC	0.90



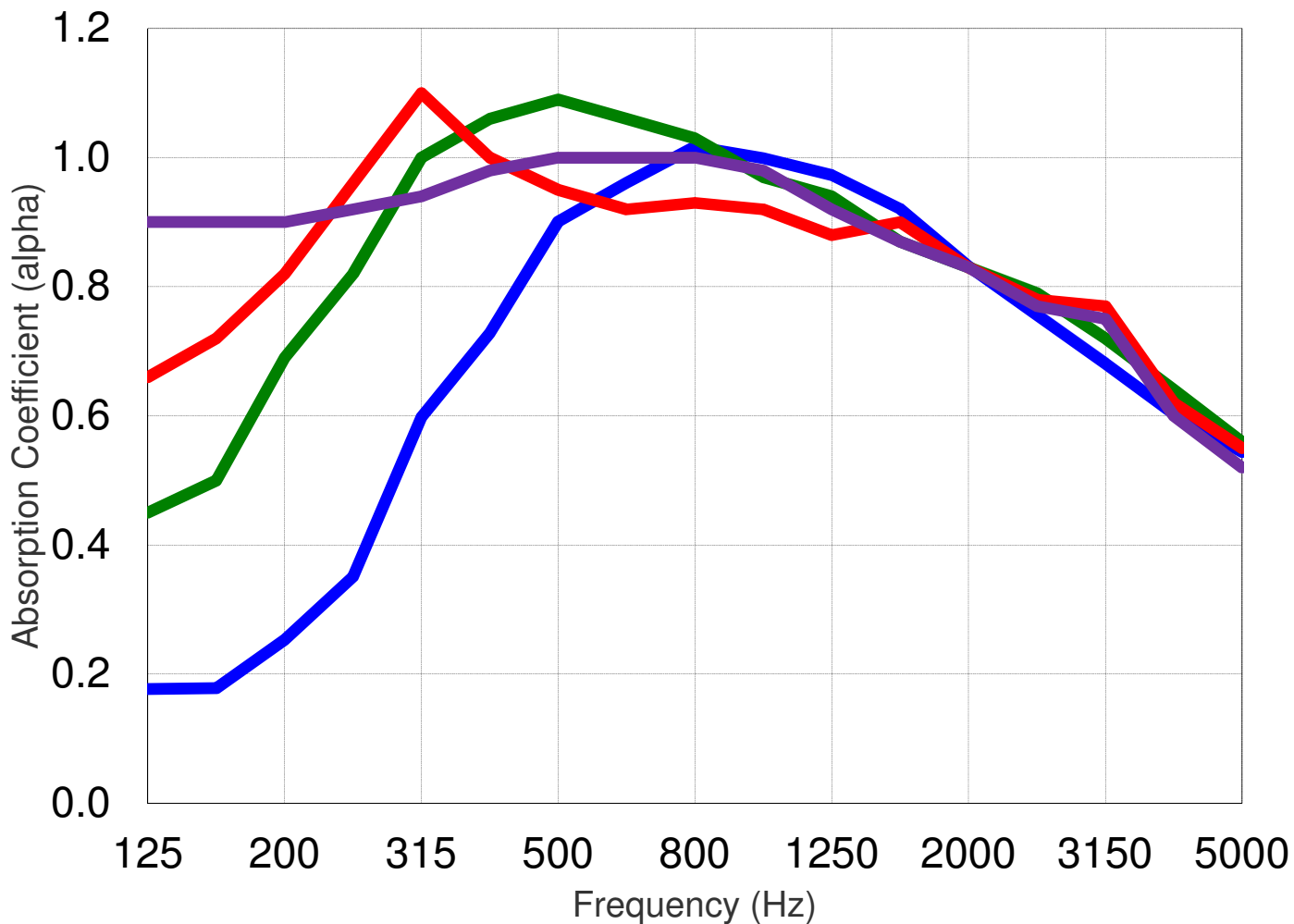
STANDARD PANEL EDGE CONDITIONS





ACOUSTICAL SYSTEMS - LLC

BAD™ Panel Random Incidence Absorption Data



Chesapeake Acoustic
Research Institute, LLC



FREQ	1.2" Thick	2.2" Thick	3.2" Thick	4.2" Thick
125	0.18	0.45	0.66	0.90
160	0.18	0.50	0.72	0.90
200	0.25	0.69	0.82	0.90
250	0.35	0.82	0.96	0.92
315	0.60	1.00	1.10	0.94
400	0.73	1.06	1.00	0.98
500	0.90	1.09	0.95	1.00
630	0.96	1.06	0.92	1.00
800	1.02	1.03	0.93	1.00
1000	1.00	0.97	0.92	0.98
1250	0.97	0.94	0.88	0.92
1600	0.92	0.87	0.90	0.87
2000	0.83	0.83	0.83	0.83
2500	0.76	0.79	0.78	0.77
3150	0.68	0.72	0.77	0.75
4000	0.60	0.64	0.62	0.60
5000	0.54	0.56	0.55	0.52